

FEEL THE POWER, FEEL THE AC LASER SYSTEMS

AC LASER SYSTEMS

Catalog V2.1 - 2022
English version



www.aclasersystems.com

PRESENTATION

AC LASER SYSTEMS, is the result of the work done by our engineers. We offer several models of high quality machines of different size, the equipments are designed to meet costumer's needs. We also offer a whole range of additional options. We have a maintenance service and a specialized staff that offers training.

AC LASER SYSTEMS will do its best to grow together with the customers.

Customers' interests are our first priority. AC LASER SYSTEMS strives to develop and produce specialized products for creating new values. Based on well-established know-how on laser equipment applications, AC LASER SYSTEMS is committed to producing improved laser equipments. AC LASER SYSTEMS always provides the customers with better quality and services and will continue its effort to do so.

AVAILABLE WORLDWIDE

Our products are available through our various distributors



The image features a dark blue background with abstract geometric elements. A white diagonal line runs from the top left towards the bottom right. Two orange lines are also present: one starts at the top left and extends towards the top right, and another starts at the top right and extends towards the bottom right. The text "LASER WELDING" is centered in a white, bold, sans-serif font.

LASER WELDING

ACGMV2



Laser Welding ACGMV2 (220W/400W/600W)			
Laser type	YAG		
Laser wavelength	1064nm		
Maximum laser output power	220W	400W	600W
Maximum peak laser power	7KW	9KW	11KW
Maximum laser pulse energy	90J/10ms	110J/10ms	130J/10ms
The pulse width	0.2~20ms		
Minimum spot diameter	0.2mm		
Pulse frequency	1~200HZ		
Table repeat positioning accuracy	0.02mm		
Table stroke (electric)	200mm× 200mm× 200mm		
Table load	200kg		
Observation system	Microscope 10X		
Work drive	Motor drive		
Manipulation of the device	Joystick for industrial control		
Cooling method	Water cooling		
Demand for electricity	220V 5% / 50HZ /40A // 380V 5% / 50HZ /60A		
Maximum power consumption of the device	7KW	9KW	11KW
External dimension of optical path of laser boom	1920mm × 600mm × 1900mm		
Table dimensions	570mm × 530mm × 700mm		

OPTIONS

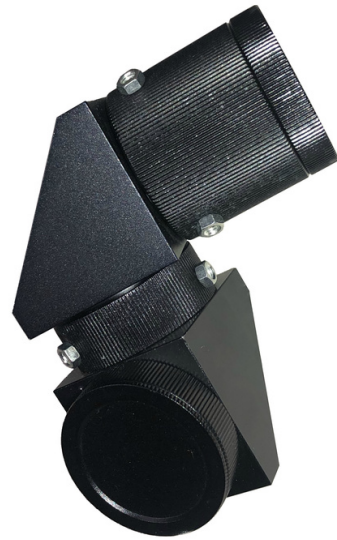
Worktable

Ref: TBL



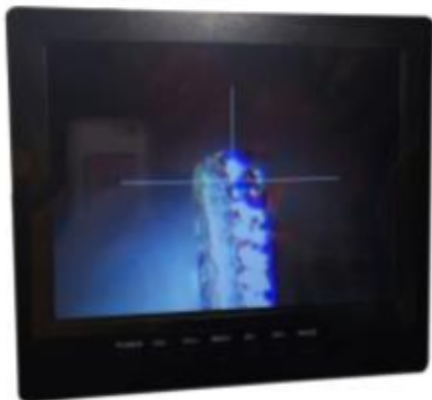
Vision 360

Ref: 360G



TV

Ref: TV



Joystick 3D

Ref: JOY3D



Air extractor

Ref: EXTG1

The parameters:

1. Negative inspiratory pressure Max 10kpa
2. Filter efficiency: 99%9
3. Working Power 220V 50Hz <5A
4. Dimension 32*29*60



